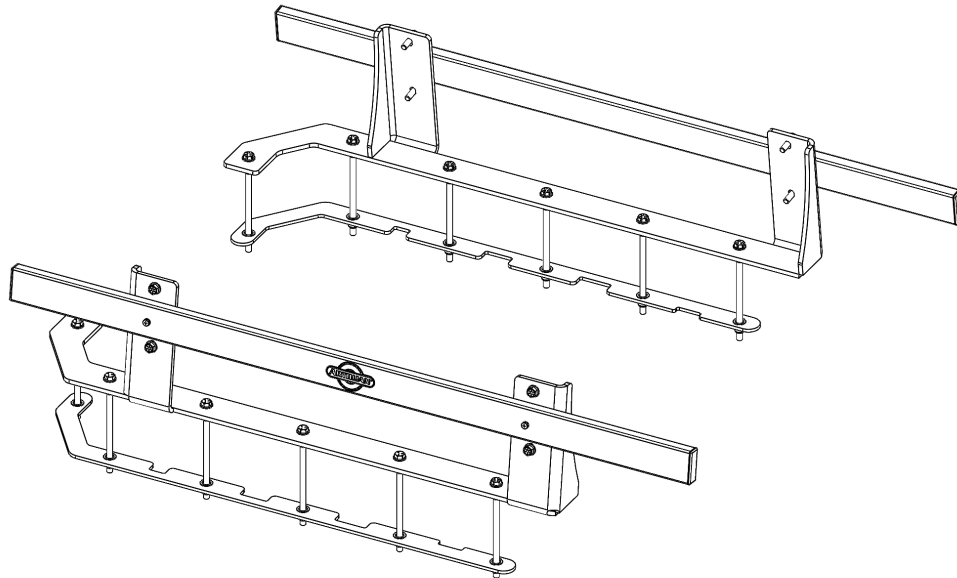




**ARTILLIAN UTV BED MOUNTED TOOL BAR FOR
POLARIS RANGER 1000
P/N: 1UTVTBPR
Fits UTV Models: POLARIS RANGER 1000, XP 1000 &
GRAVELY ATLAS JSV 3400SD**



The **Artillian UTV Tool Rack** is an innovative system for attaching accessories to the vehicle's bed. It allows for carrying ladders, wood, and any of the **Artillian ROPS Mounted Tool Bar Accessories**.

The Artillian UTV Bed Mounted Tool Bar for Polaris Ranger 1000 & Gravelly Atlas JSV 3400SD seamlessly integrates the UTV Tool Rack to the Polaris Ranger 1000 or Gravelly Atlas JSV vehicles.

The proprietary **Cam Lever Latching** feature found on the many optional accessories allows for installation and removal of a given accessory in seconds.

| Approximate Installation Time |
|--|
| Experienced Dealer Technician – 30 Minutes |
| Average Dealer Technician – 45 Minutes |
| Do-It-Yourself – 60 Minutes |

| Approximate Product Specifications |
|---|
| Mounting Bar Width: 42 inches |
| Weight: 37 lbs. (not including accessories) |
| Capacity: 100 lbs./tool bar (including accessories) |



CAUTION

Do not exceed the rated capacity for the Tool Bar or its accessories. Doing so may result in damage to the Tool Bar and will void the warranty.

The contents of this envelope are the property of the owner. Leave with the owner when installation is complete.

All images shown are for illustration purposes only. Actual product may vary due to product enhancement.

WARNINGS, TIPS, & REQUIRED TOOLS

Artillian products feature an assembly of parts designed for your vehicle which require adjustment and alignment of components to accommodate vehicle variations and provide proper installation. For accurate installation, proper operation, and years of satisfaction, please read and understand the installation and owner's manual fully prior to installing the product.

From all of us at Artillian, we thank you for choosing our product.

NOTICE

This product adds additional weight to the base vehicle. All product and accessory weights are listed in the Installation & Owner's Manual. Deduct the product (and accessories) total weight from the vehicle's rated capacity and never exceed the vehicle's rated capacity, including driver and passenger.

WARNING

This product is intended to increase the functionality of the UTV bed for use in **SLOW SPEED CONDITIONS**. The weight and location of this product and its accessories (when mounted on a UTV bed) will increase the vehicle's center of gravity. This may cause the vehicle to become less stable when driving. Additional caution should be used when driving with this product installed, especially when multiple accessories and/or tools are added.

TRAVEL SPEEDS MUST BE GREATLY REDUCED TO AVOID ROLLOVER. FAILURE TO COMPLY COULD RESULT IN INJURY OR DEATH.

This product is not intended for use in trail riding, driving on particularly rough terrain, on slopes, or at high speeds.

Do not attempt to dump the vehicle bed with accessories installed on either the Tool Bar or the Tool Rack. Doing so may result in damage to the Tool Bar, the Tool Rack, the Tool Bar Accessories, or to the vehicle bed or its dumping mechanism.

GENERAL INFORMATION BEFORE YOU START

- To assist with installation, leave all fasteners loose for later adjustment unless otherwise specified.
- Use caution to avoid damaging factory installed threaded inserts. Begin thread engagement by hand to avoid or correct potential cross-threading.
- Use Loctite (preferably #263) on all bolts installed into threaded inserts.
- Check tightness of all bolts after 150 hours of operation.

TOOLS REQUIRED:

- Set of Standard and Metric Sockets (3/8" Drive)
- 3/8" Drive Ratchet
- Set of Standard and Metric Open-End Wrenches
- T30 and T40 Torx Bits
- Phillips head drill bit
- Non-marring Clamps
- Sharpie or other means of marking hole locations
- Drill
- 11/32" Drill Bit

KIT INSTALLATION

WARNING

It is the user's responsibility to ensure that installation of this product does not affect the functionality of the vehicle ROPS, tires, or any other safety feature of the vehicle. Failure to do so may result in injury or death. Due to the many features on the UTV vehicle, the Bed Mounted Tool Bar or some of its quick removal accessories may interfere with dump bed operation, fender flares, or tires. If necessary, the quick-release Cam Lever Latches on the ROPS Mounted Tool Bar accessories allow a given accessory to be quickly removed and relocated to a non-interfering location.

Artillian strives to continuously improve our products. As such, the actual product may vary from the images shown throughout this manual.

Note: *If installing **The Artillian UTV Bed Mounted Tool Bar** on the Polaris Ranger 1000, proceed with the following steps 1-12. If installing on the Gravelly Atlas JSV 3400SD, skip to page 5 and start with step 13.*

1. Park the vehicle on a flat, level surface.
2. Open the tailgate. Use a 10mm socket to remove the left and then right tail lights. See Fig. 2.
3. Per Fig. 3, disconnect the left and right tail lights from the vehicle. Set the tail lights with mounting hardware aside for re-use in Step 12 on the next page.
4. Close the tailgate and tilt the bed back using the vehicle's bed latch. See Fig. 4.
5. Using a T30 Torx bit, remove (4) screws from the bottom of the left and right sides of the bed. Set removed hardware aside for re-use. See Fig. 5.
6. Using a T40 Torx bit, remove the screw next to the latch handle on the left side and right side of the bed. Set removed hardware aside for re-use. See Fig. 6.

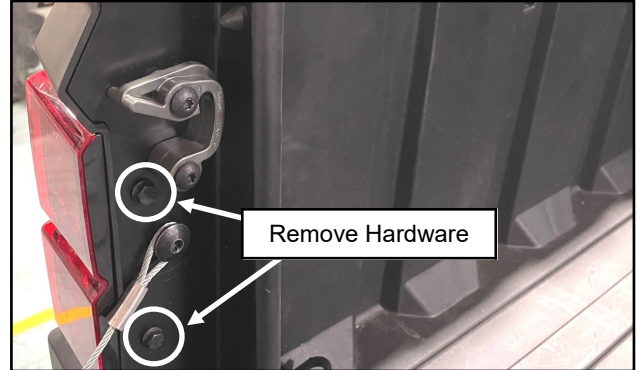


Fig. 2; Remove Left Tail Light

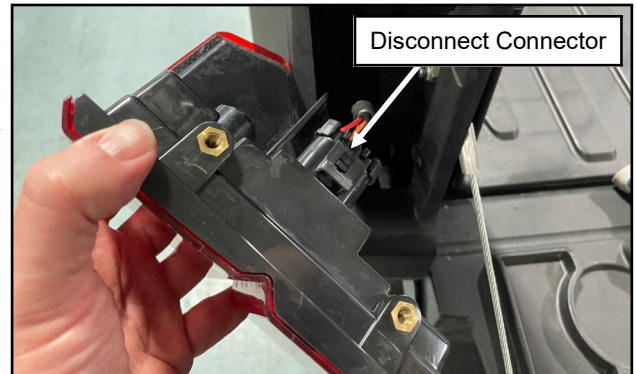


Fig. 3; Disconnect Left Tail Light



Fig. 4; Tilt Bed Back

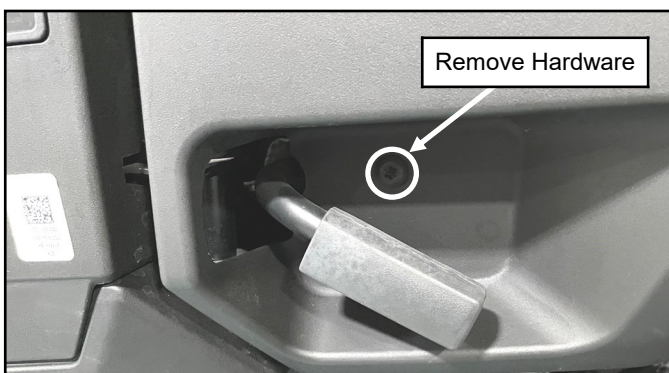


Fig. 6; Remove Screw Next to Latch Handle

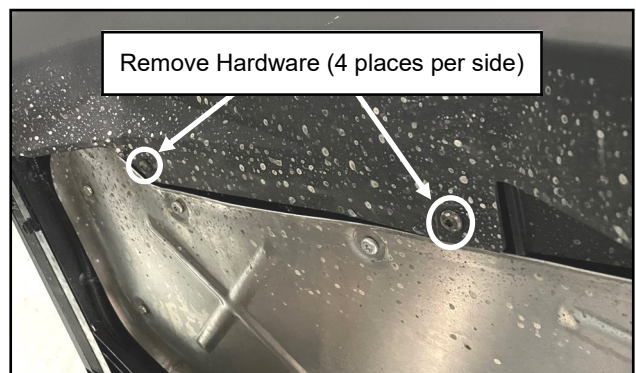


Fig. 5; Remove Underside Screws on the Side Panel

KIT INSTALLATION

7. Using a T30 Torx bit, remove the (4) screws on the inside of the left and right side of the bed. When removing the screws, the side panels will fall off the bed of the body. Hold the side panels when removing the screws. See Fig. 7.
8. Put the bed back down. Using (6) of the supplied 5/16" X 6" long bolts and (6) 5/16" washers, use a 1/2" socket to install the left mounting bracket and backing plate. Repeat this step on the right side of the bed with right mounting bracket and backing plate. Torque the 5/16" bolts to 150 (Inch-Pounds) or 17 (Newton-Meters). See Fig.8.

Note: Make sure that the threaded inserts on the backing plates are pointed towards the ground as shown in Fig. 8.

9. With assistance, install 42" long tool bar, tube clamps, and 32" long UTV Tool Rack Vertical Tubes (supplied in the UTV Bed Mounted Tool Rack) on left side of bed. Use (4) of the supplied 5/16" X 1" screws to secure. When placing the tool bar, make sure to leave a 1" gap between the end of the tool bar and the ROPS of the vehicle. Repeat on right side. See Fig. 9.

Note: Make sure that the (2) threaded inserts of the Vertical tubes are placed on the top/inside of the assembly.

10. See Installation Manual for Artillian UTV Bed Mounted Tool Rack (1UTVRK) to complete installation of the tool rack. Once installation of the tool rack is complete, finish the below steps to complete this kit installation.

11. Tilt the bed back. Re-install the bed's side panels removed on Steps 5-7. See Fig. 11.

Note: When tilting the bed back, grab the tool rack and slowly allow the bed to tilt back. Do not let it free fall.

12. Close the bed and open the tailgate. Re-install the tail lights removed in Steps 2 and 3. Close the tailgate. See Fig. 12. The kit installation is now complete.

Note: The 5/16" x 1" long bolts & 5/16" flange nuts may be discarded if the tool bar has been installed on a Polaris vehicle.



Fig. 7; Remove Left Tail Light

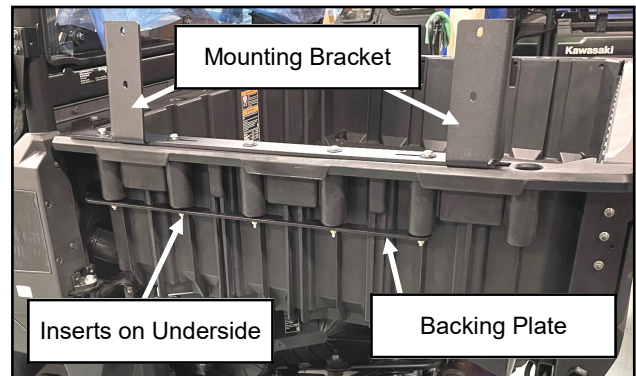


Fig. 8; Install Left Bracket and Backing Plate

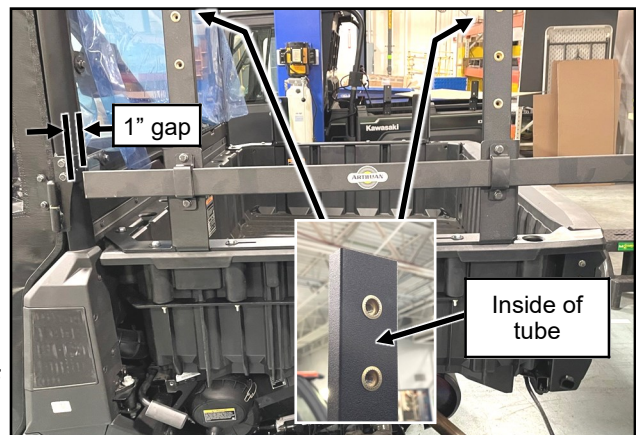


Fig. 9; Install Tool Rack's Vertical Tubes.



Fig. 12; Re-install Tail Lights

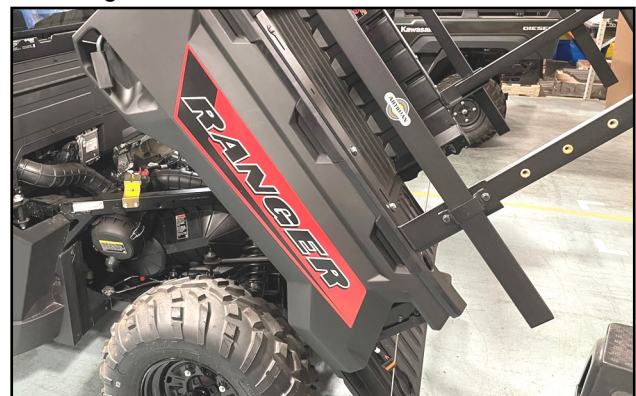


Fig. 11; Re-install the Bed's Side Panels

KIT INSTALLATION

FOR INSTALLATION ON GRAVELY ATLAS JSV 3400SD

1. Position the left side tool bar mounting bracket on top of the left side bed rail centering it both left to right and front to rear and clamp in place. See figure 13 below.
2. Using the tool bar mounting bracket as a template, mark the center of the (6) slots.
3. Remove clamps and set aside the tool bar mounting bracket. Drill the vehicle's bed rails where previously marked.
4. Deburr holes and any sharp edges. Paint bare metal areas to prevent future oxidation.
5. Fasten the left side tool bar mounting bracket using the (6) supplied 5/16" x 1" bolts, (6) 5/16" washers and (6) 5/16" flange nuts. See figure 17.
6. With assistance, install 42" long tool bar, tube clamps, and 32" long UTV Tool Rack Vertical Tubes (supplied in the UTV Bed Mounted Tool Rack) on left side of bed. Use (4) of the supplied 5/16" X 1" screws to secure. When placing the tool bar, make sure to leave a 1" gap between the end of the tool bar and the ROPS of the vehicle. Repeat on right side. See Fig. 9 found on the previous page.

Note: Make sure that the (2) threaded inserts of the Vertical tubes are placed on the top/inside of the assembly.

7. Repeat steps 1-6 on the right side of the vehicle.
8. See Installation Manual for Artillian UTV Bed Mounted Tool Rack (1UTVRK) to complete installation of the tool rack.

Note: The backing plates and 5/16" x 6" long bolts may be discarded if tool bar has been installed on a Gravelly vehicle.

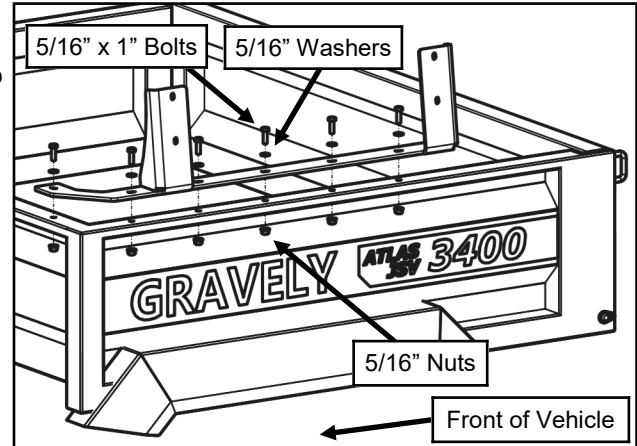


Fig. 17; Tool Bar Mounting Hardware

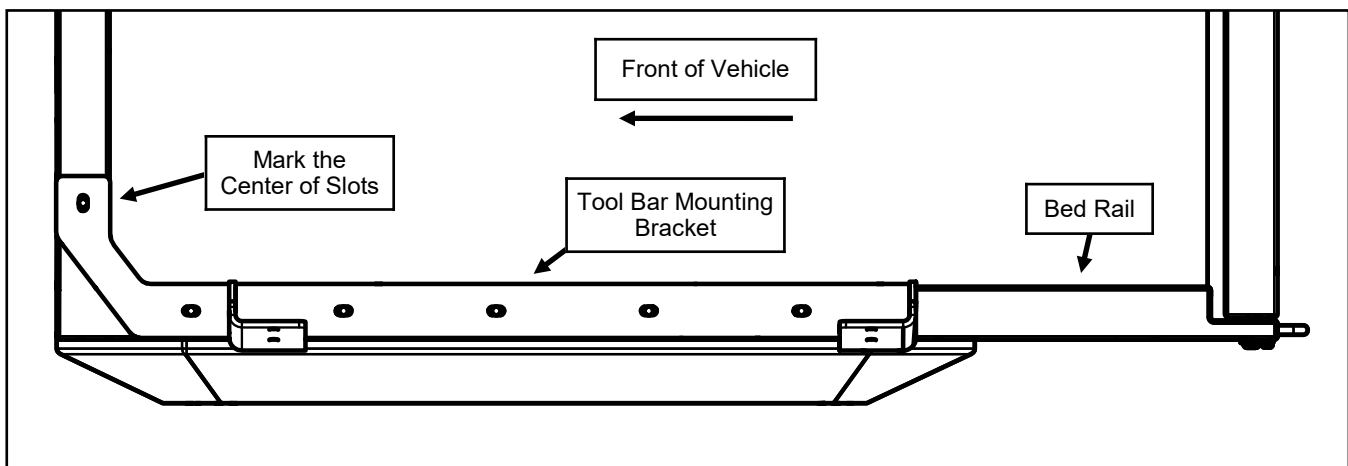


Fig. 13; Top View of Bed - Tool Bar Mounting Bracket Orientation on Gravelly Vehicle

FINISHING TOUCHES

1. Make sure the tool bars are tightly fastened in their desired location as the following procedure is meant to securely fasten the tool bar in place and will result in a permanent hole in the tool bar.
2. Using a single sealing washer with each of the self-drilling screws, begin drilling the screws in place at the two locations highlighted in Figures 2.1 and 2.2 on each of the tool bars (four in total).

Hardware Used

#10-32x1/2" Self-Drilling Screw 4

3/8"ODx1/16" Sealing washer 4

Loctite 263 1

Tools required

Power Drill with Phillips head bit

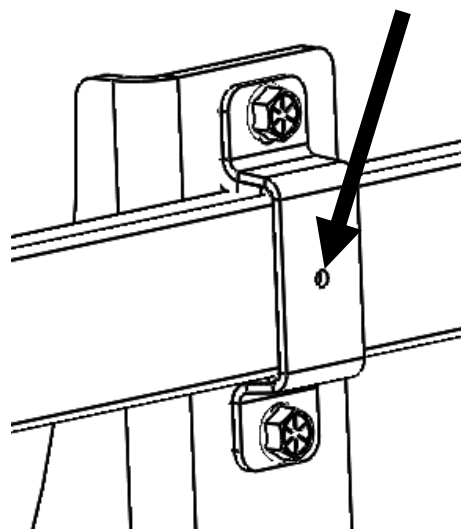


Figure 2.1 (Bracket hole for self-drilling screw)

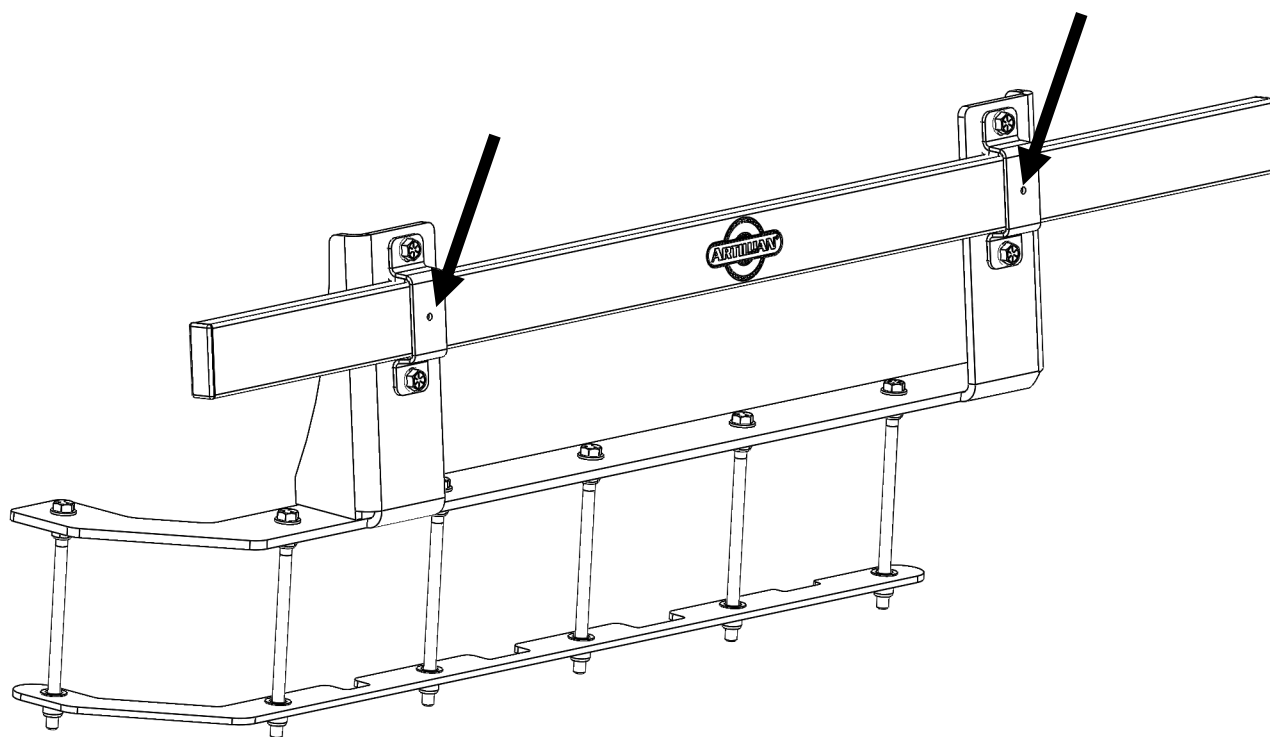
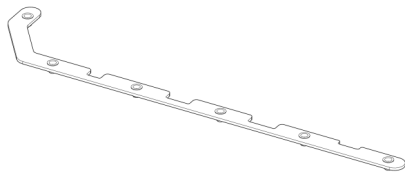


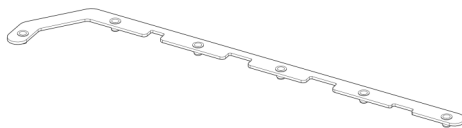
Figure 2.2 (Two points on each bar)

SERVICE PARTS:

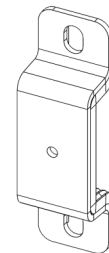
BACKING PLATE ASS'Y, LEFT
P/N: 8SV-113-00263-L (QTY.: ONE)



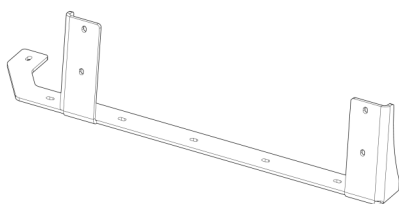
BACKING PLATE ASS'Y, RIGHT
P/N: 8SV-113-00263-R (QTY.: ONE)



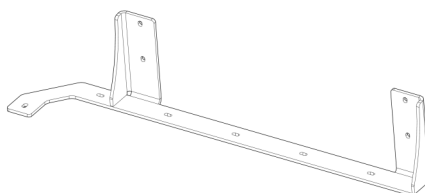
TUBE CLAMP ASS'Y.
P/N: 8SV-110-00068 (QTY.: ONE)



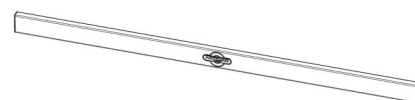
MOUNTING BRACKET, LEFT
P/N: 8SV-SM-02041-L (QTY.: ONE)



MOUNTING BRACKET, RIGHT
P/N: 8SV-SM-02041-R (QTY.: ONE)



MOUNTING BAR ASS'Y. (REF.: 42" LG.)
P/N: 8SV-113-00186 (QTY.: ONE)

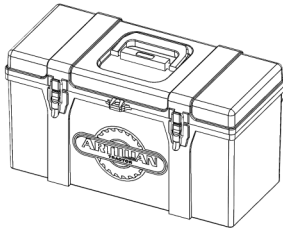


1/2" V-GROOVE WEATHERSEAL
P/N: 9SV-PR20-10 (QTY.: 10 FEET)

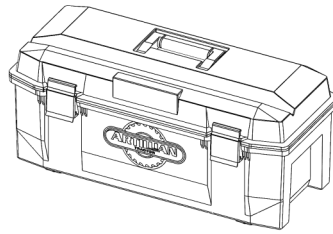


AVAILABLE ACCESSORIES:

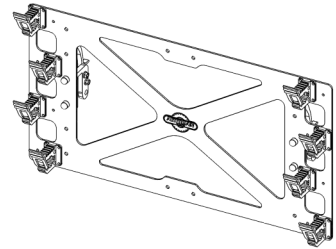
ROPS MOUNTED TOOLBOX, MEDIUM
P/N: 1RMTBX5



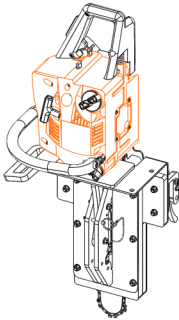
ROPS MOUNTED TOOLBOX, X-LARGE
P/N: 1RMTBXL



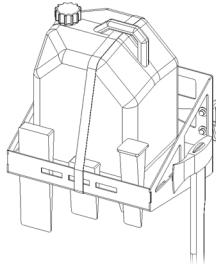
ROPS MOUNTED TOOL RACK
P/N: 1RMTRK



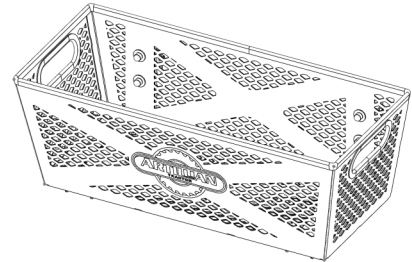
ROPS MOUNTED CHAINSAW MOUNT
P/N: 1RMCSM
(chainsaw shown for illustration purposes)



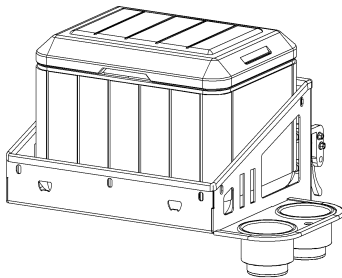
ROPS MOUNTED FUEL CAN HOLDER
P/N: 1RMFCH
(fuel can, etc. shown for illustration purposes)



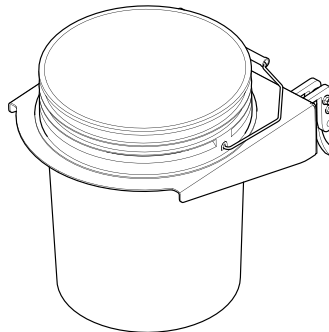
ROPS MOUNTED TOOL BASKET
P/N: 1RMTBSK



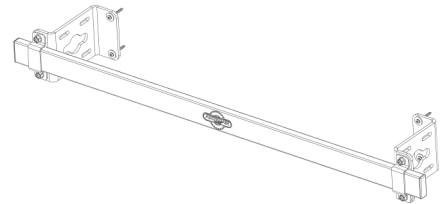
BEVERAGE COOLER HOLDER
P/N: 1RMBCH
(cooler shown for illustration purposes)



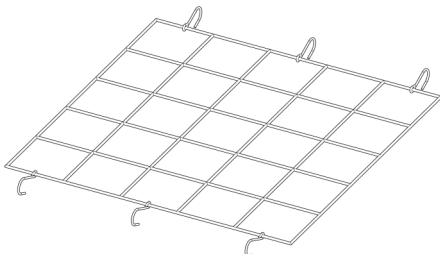
ROPS MOUNTED 5-GALLON BUCKET
HOLDER - P/N: 1RM5GBH
(Bucket shown for illustration purposes)



TOOL BAR WALL MOUNT
P/N: 1RMTBWM



BUNGEE NET, 15" SQ., W/6 HOOKS
P/N: 1BN15SQ



MORE ACCESSORIES COMING SOON!

Warranty

Artillian, LLC warrants to the original purchaser that this product will be free from defects in material and workmanship for a period of **90 days** from the date possession taken by the original purchaser for use with Artillian hydraulic products and used as intended and under normal service and conditions for personal use. If not purchased for use with Artillian hydraulic products (e.g. Grapple, Plow Adapter, etc.), the warranty period is limited to **30 days**.

Finishes (coatings, labels, & decals) are not inclusive. Artillian, LLC reserves the right to inspect items claimed to be defective in material or workmanship. Artillian LLC's obligation under this warranty is limited to repair or replacement with a nearest similar part.

This Warranty will not apply to any part or product which in Artillian LLC's judgment shall have been misused or damaged by accident, abuse, misapplication, fire, negligence, or lack of normal maintenance or care, or which has been altered or repaired in a way which adversely affects its performance or reliability, or which has been used for a purpose for which the product is not designed.

Artillian, LLC's obligations under this warranty, to the extent allowed by law, is in lieu of all warranties, implied or expressed, including implied warranties of merchantability and fitness for a particular purpose and any liability for incidental and consequential damages with respect to the sale or use of the product warranted. In any event, liability on behalf of Artillian LLC is limited to the original purchase price.

Tightening of Non-Structural Bolts

For light or medium duty fastening, Curtis recommends using a general industry standard of tightening until snug and then giving an additional one quarter turn of the tool as deemed reasonable for the application (i.e.: at the installer's discretion).

If torque values are required, the examples listed below are intended as a reasonable reference for use in the majority of non-structural fastener applications such as: small diameter fasteners; bolts passing thru tubing, glass, plastic, nylon or rubber washers, threaded inserts, etc.

If more than one application below applies, use the lower torque value.

| FASTENER SIZE: | FASTENER TYPE: | WASHER MATERIAL: | APPLICATION: | TORQUE (INCH-POUNDS) (±5) |
|----------------|-------------------|------------------|------------------------------------|---------------------------|
| #10 | Machine Screws | - | in Nylon P-Clamps | 20 |
| #10 | Machine Screws | - | Strobe Light (plastic base) | 35 |
| M5 | Set Screws | - | Wiper Arm | 20 |
| 1/4" | Cap Nut | - | Windshield Wiper | 20 |
| 1/4" | Bolts | - | Tubing (5/8" to 3/4" wide) | 132 |
| 1/4" | Bolts | Rubber | - | 60 |
| 1/4" | Bolts | Nylon / Plastic | - | 72 |
| 1/4" | Bolts | - | Factory Installed Threaded Inserts | 132 |
| 5/16" | Bolts | - | Tubing (1" or wider) | 60 |
| 5/16" | Flat Head Bolts | - | Plastic Windshield Hinge | 79 |
| 5/16" | Bolts | Rubber | - | 120 |
| 5/16" | Bolts | Nylon / Plastic | - | 150 |
| 5/16" | Ball Studs | - | - | 150 |
| 5/16" | Bolts | - | Factory Installed Threaded Inserts | 240 |
| 3/8" | Bolts | - | Tubing | 120 |
| M12 | Door Striker Pins | - | - | 120 |